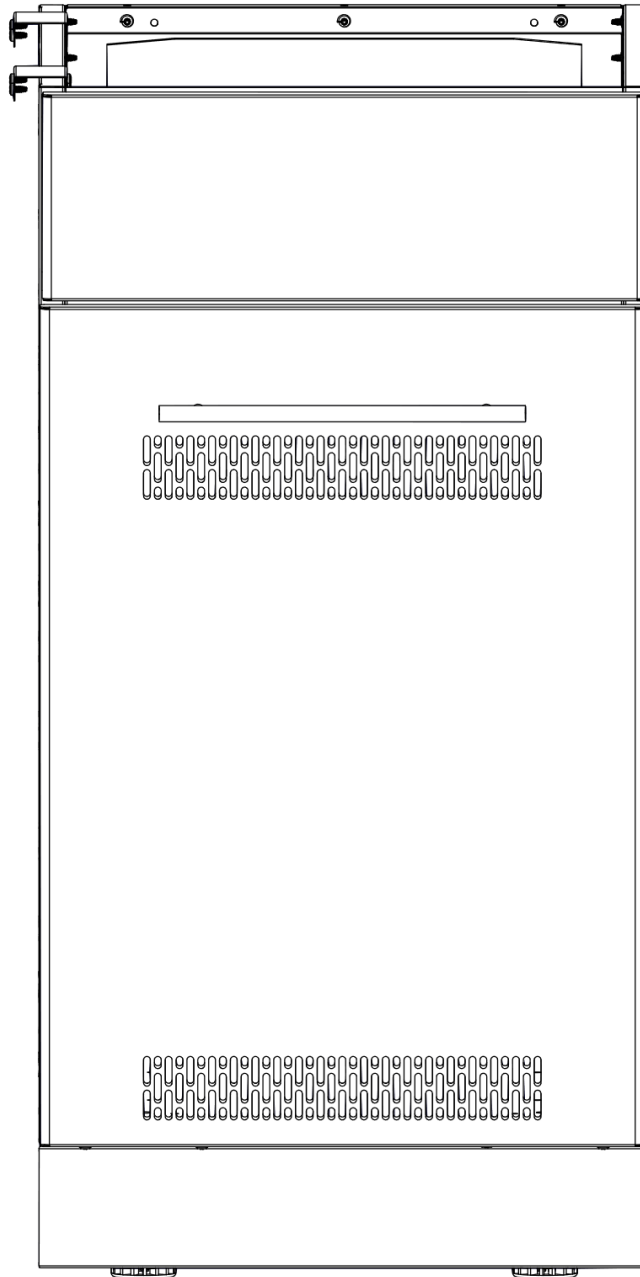


Broil King®

ASSEMBLY MANUAL & PARTS LIST - MANUEL DE MONTAGE & LISTE DE PIÉCES - MANUAL DE ARMADO Y LISTA DE PARTES



Broil King
802700

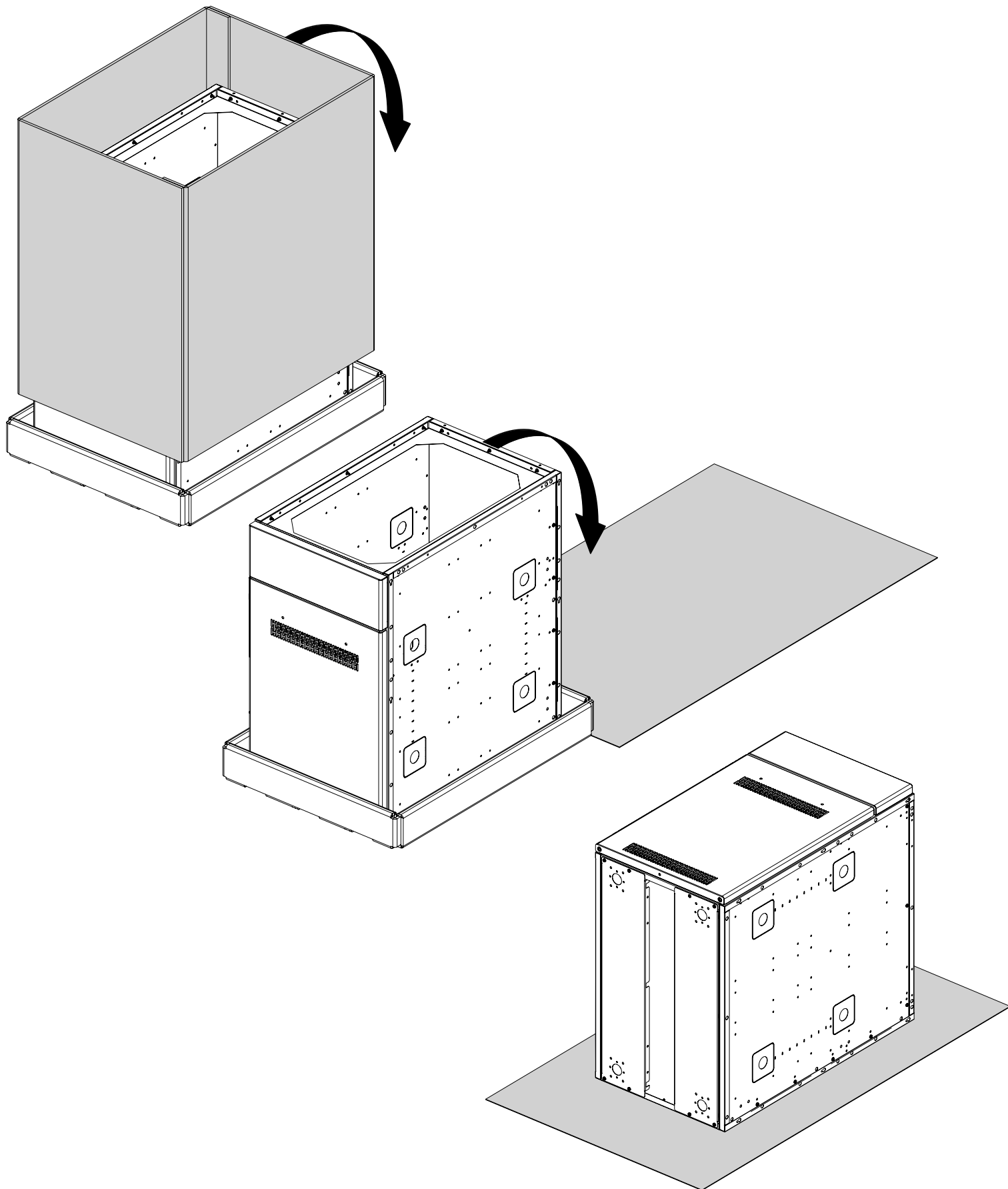
RETAIN FOR FUTURE REFERENCE - VEUILLEZ CONSERVER POUR REFERENCE ULTERIEURE - CONSERVAR PARA FUTURAS CONSULTAS

Onward
MANUFACTURING COMPANY
585 KUMPF DRIVE
WATERLOO, ONTARIO, CANADA
N2V 1K3

SINCE 1906
LIMITED

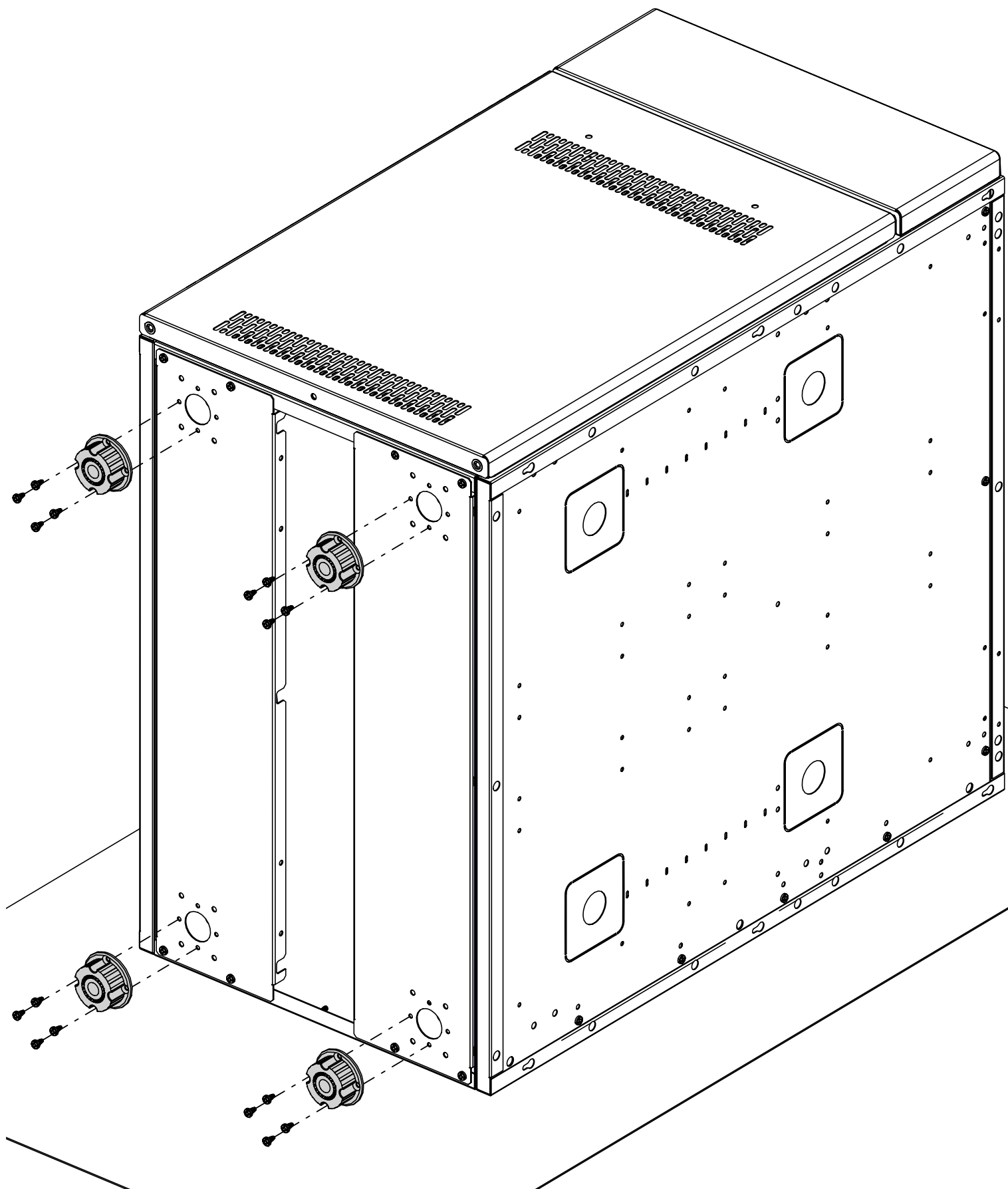
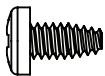
70084-E52 REV A 04/20

1

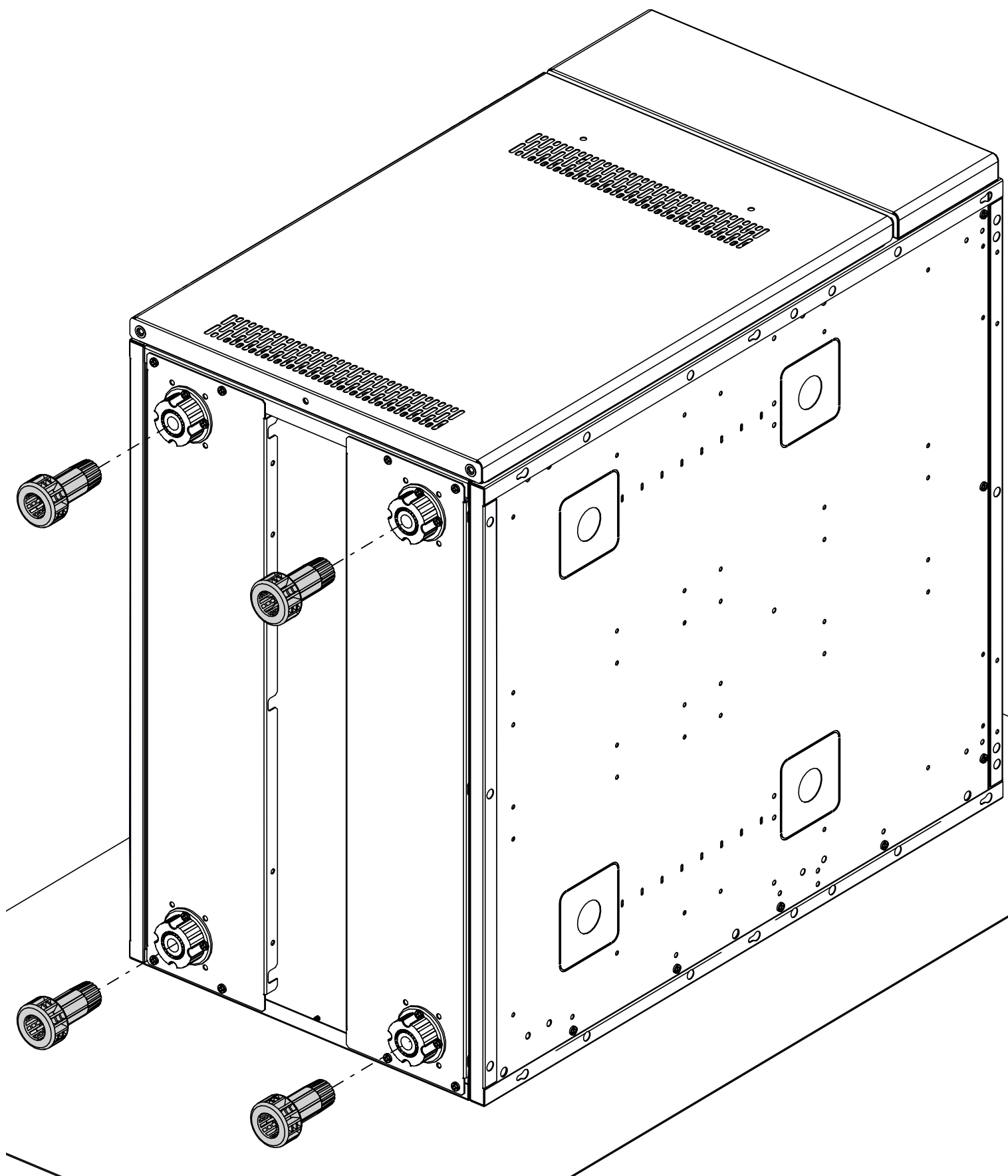


2

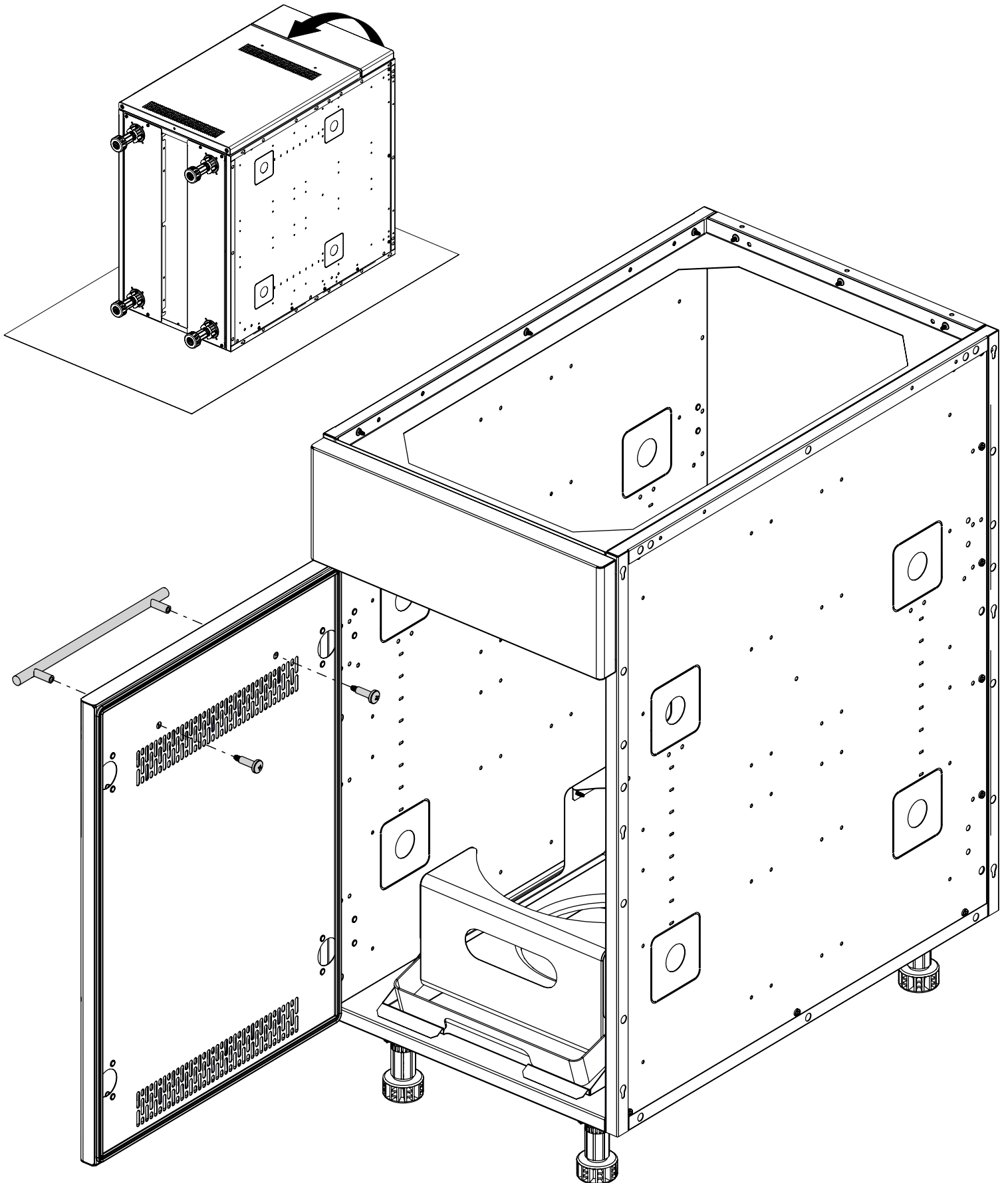
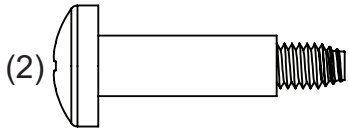
(16)



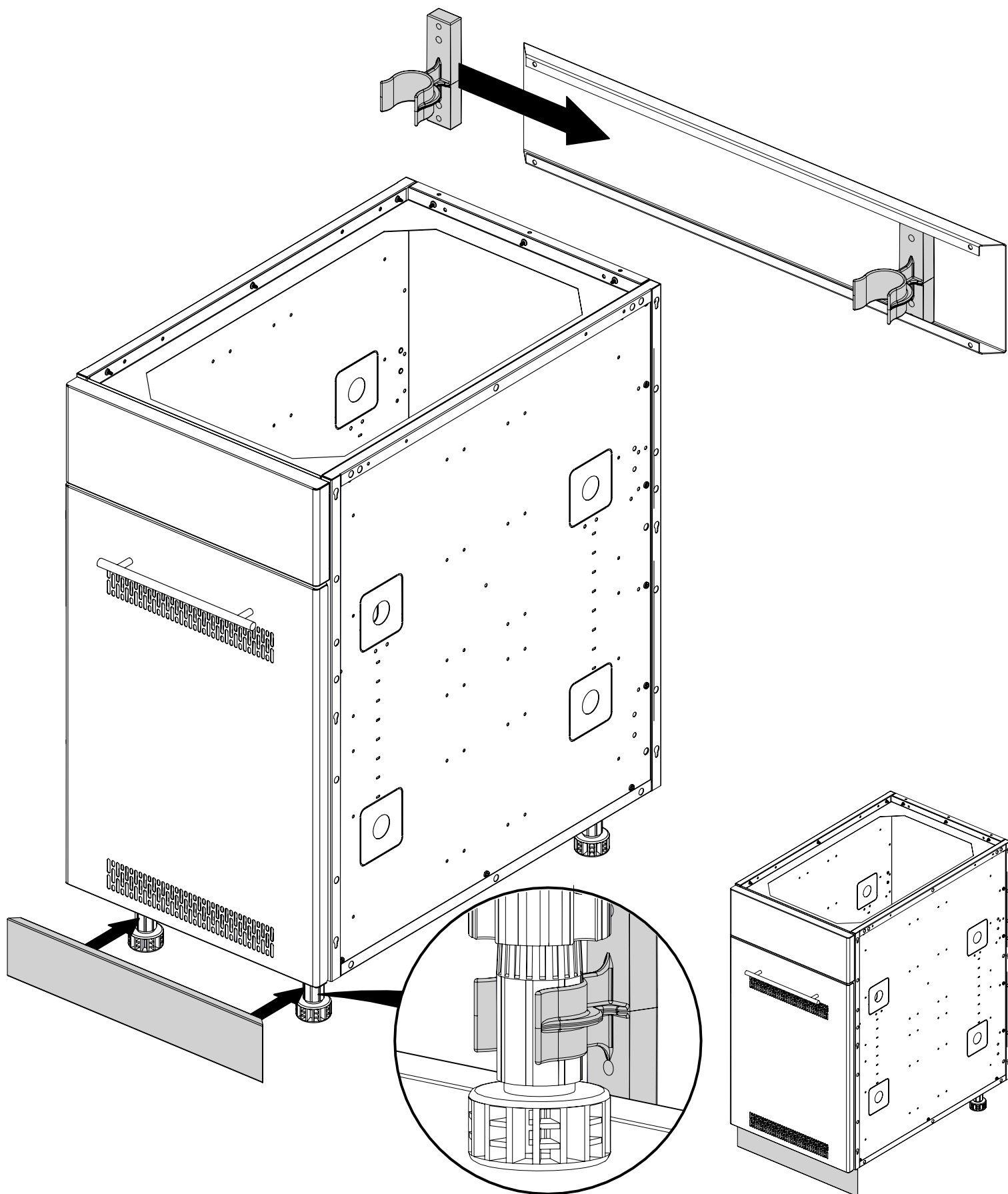
3

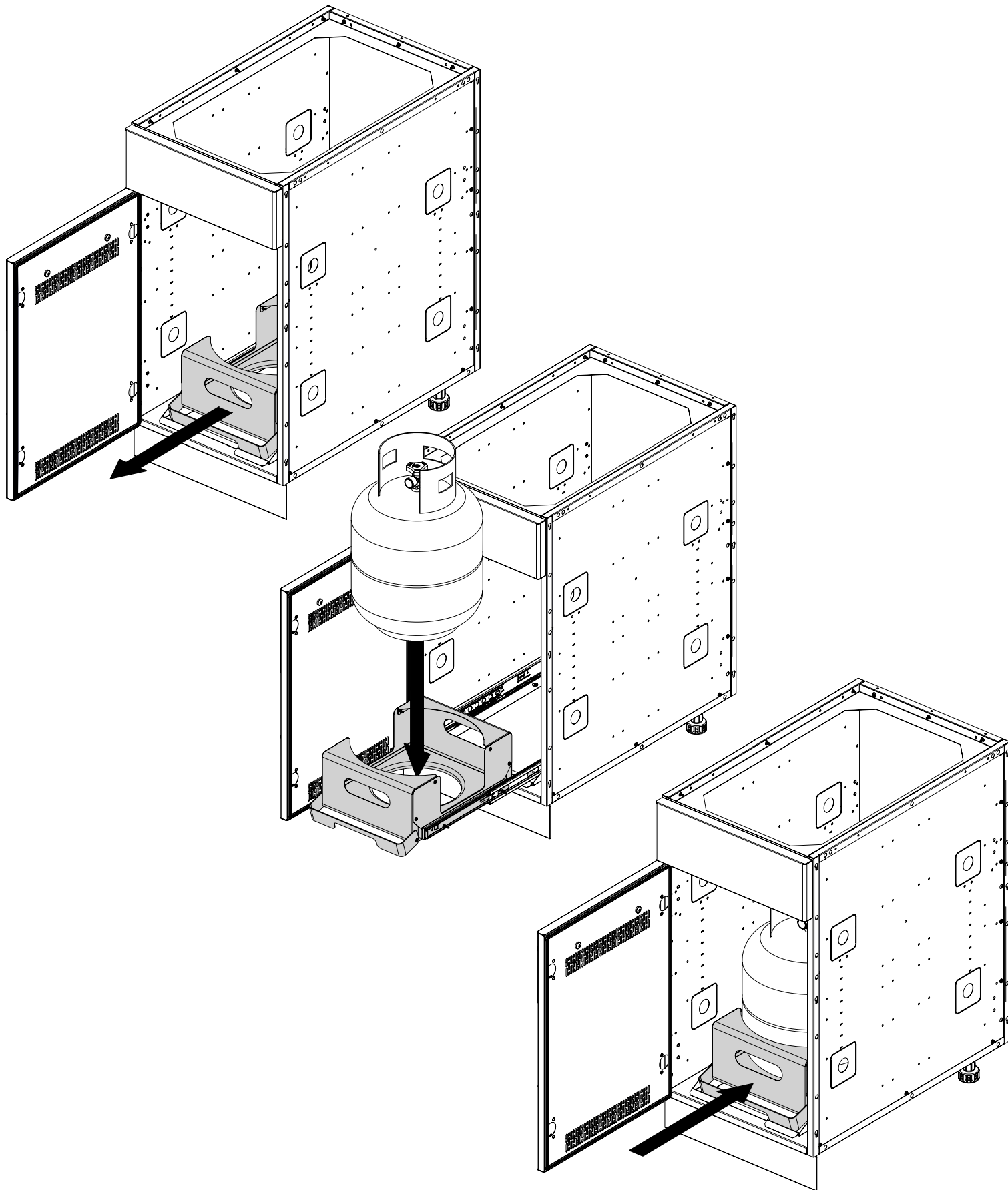


4

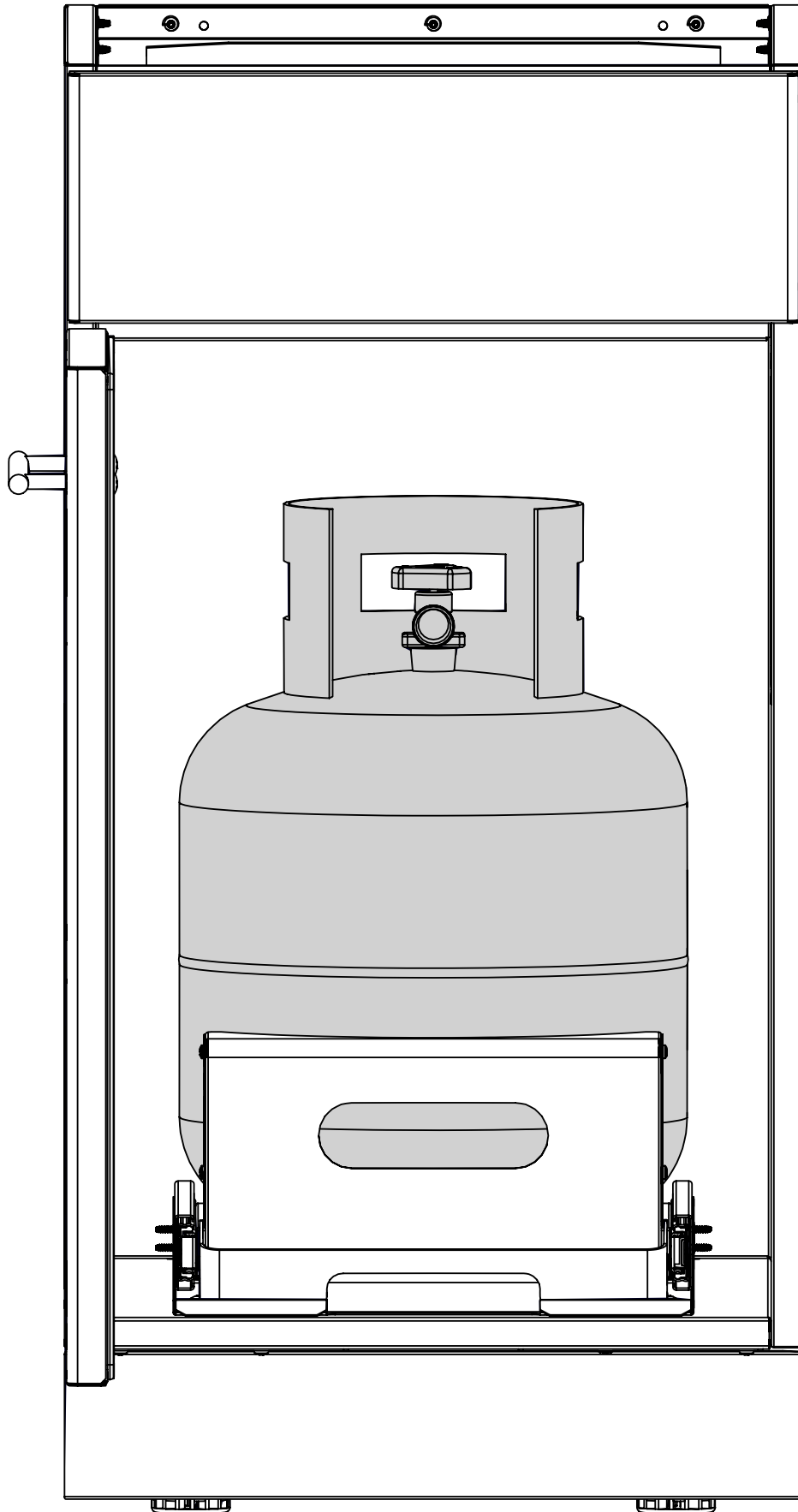


5



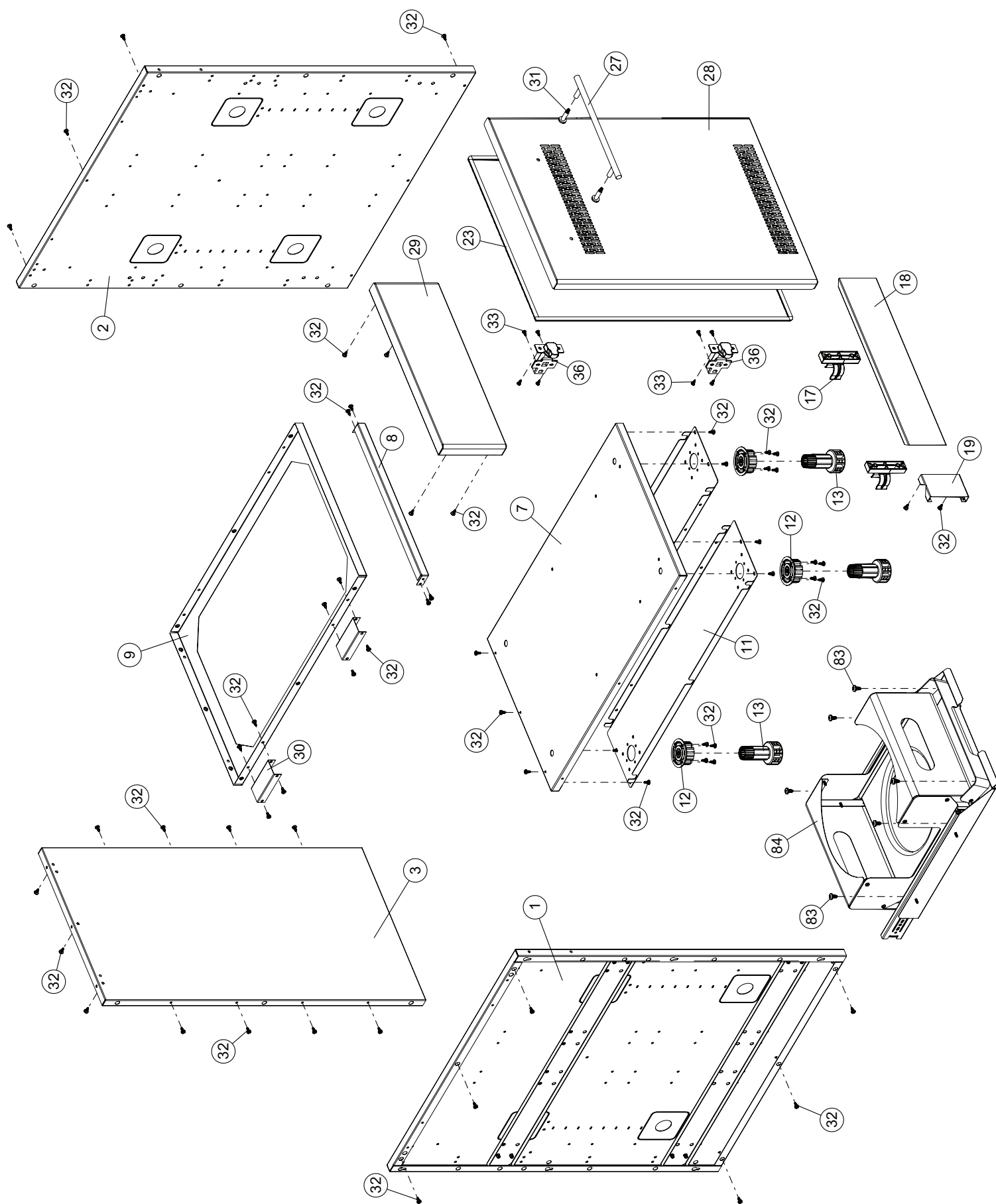


7



PARTS LIST / LISTE DES PIECES / LISTA DE PARTES

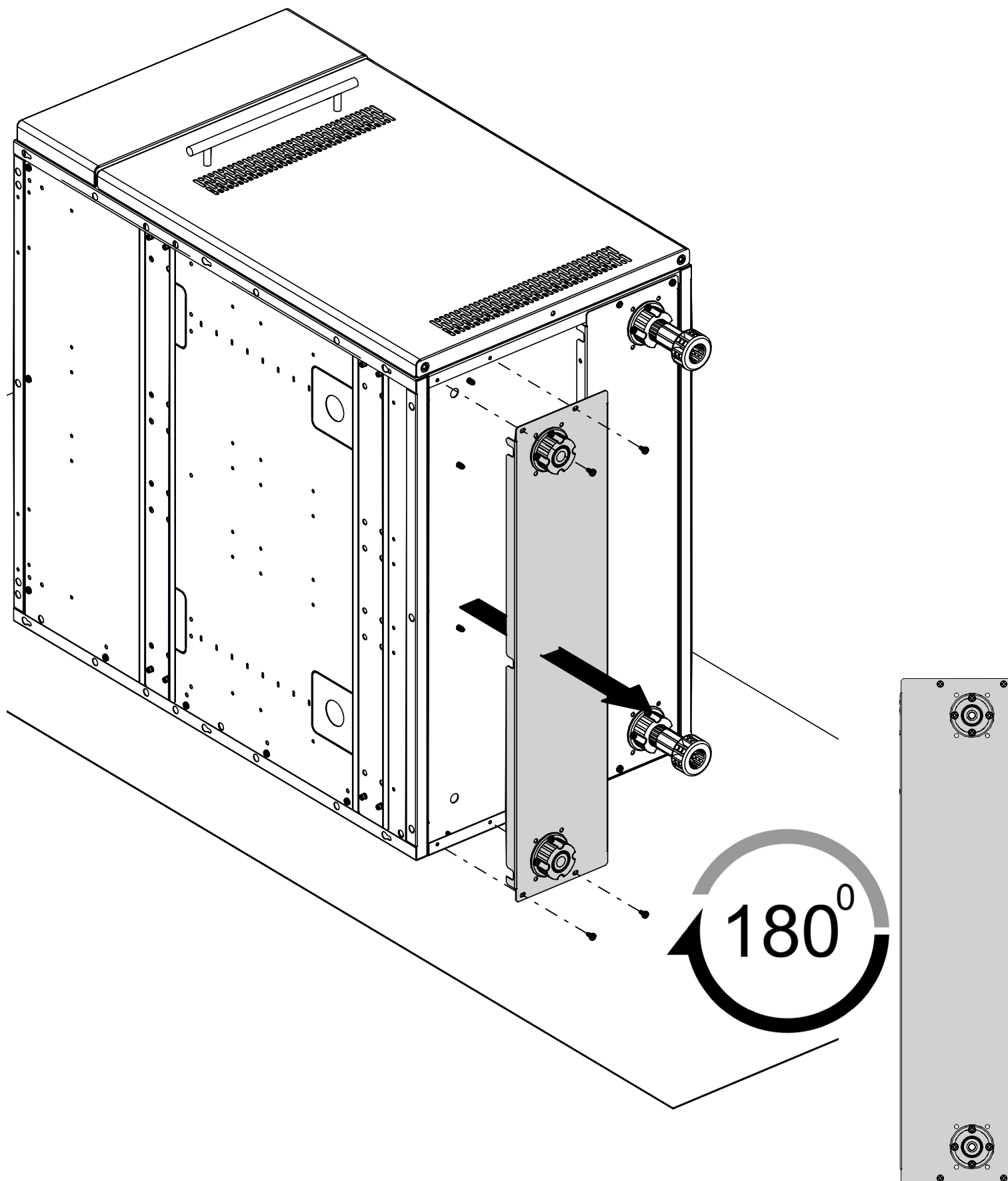
KEY #	ITEM #	DESCRIPTION	DESCRIPTION	DESCRIPTION	802700
1	71289-183R	SIDE PANEL	PANNEAU LATÉRALE	PANEL LATERAL	1
2	71289-183	SIDE PANEL	PANNEAU LATÉRALE	PANEL LATERAL	1
3	71281-103	REAR PANEL	PANNEAU - ARRIÈRE	PANEL - POSTERIOR	1
7	71091-103	BASE	TABLETTE INFÉRIEURE	BASE	1
8	71031-103	DRAWER SUPPORT	SUPPORT	SOPORTE	1
9	71011-103	UPPER BRACE	SUPPORT SUPÉRIEUR	SUPPORT SUPÉRIEUR	1
11	71639-103	CASTOR BRACKET	SUPPORT DE ROULETTE	SOPORTE - PARA RUEDITA	2
12	71039-078	LEVELER BRACKET	TÊTE DE NIVELEUR À VISSER	CABEZA PARA NIVELADOR	4
13	71099-078	LEVELER LEG	NIVELEUR DE CAISSON	NIVELADOR	4
17	71039-108	KICK PLATE LEG CLIP	ATTACHE POUR COUP-DE-PIED	GRAPA PARA NIVELADOR	2
18	71503-003	KICK PLATE	PLAQUE COUP-DE-PIED	RODAPIÉS	1
19	71530-163	KICK PLATE BRACKET	SUPPORT POUR PLAQUE COUP-DE-PIED	BASE PARA GRAPA	1
23	71049-901	DOOR GASKET	JOINT DE PORTE	SELLO DE PUERTA	1
27	76100-933A	HANDLE	POIGNEE	MANGO	1
28	77071-203A	DOOR ASSEMBLY	PORTE	PUERTA	1
29	71081-113	FRONT FACIA	PANNEAU AVANT	PANEL FRONTAL	1
30	76039-103	CABINET CLAMP	PINCE DE CABINET	ALICATES PARA GABINETE	2
31	Y-111567	SCREW M8 SHOULDER	VIS M8	TOURNILLO M8	2
32	Y-29304S	SCREW #10-24 X 3/8	VIS #10-24 X 3/8	TOURNILLO #10-24 X 3/8	66
33	S21127S	SCREW #8-32 x 7/16	VIS #8-32 x 7/16	TOURNILLO #8-32 x 7/16	8
36	76079-90	DOOR HINGE	CHARNIÈRE	BISAGRA	2
83	Y-12865	SCREW 1/4-20 X 1/2	VIS 1/4-20 X 1/2	TOURNILLO 1/4-20 X 1/2	6
84	71099-10A	TANK BASE	SUPPORT DU RESERVOIR	BASE DEL TANQUE	1



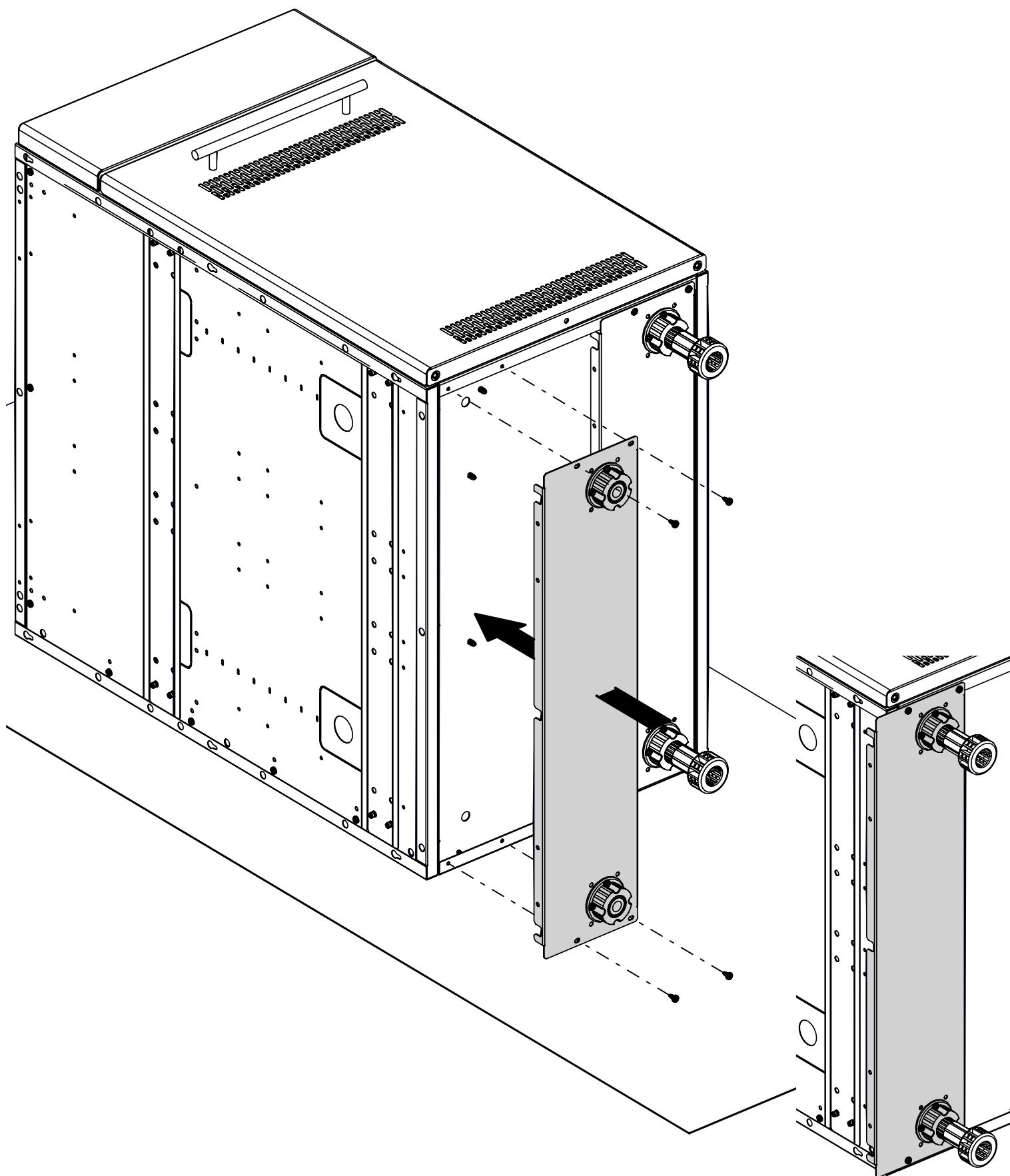
Broil King®



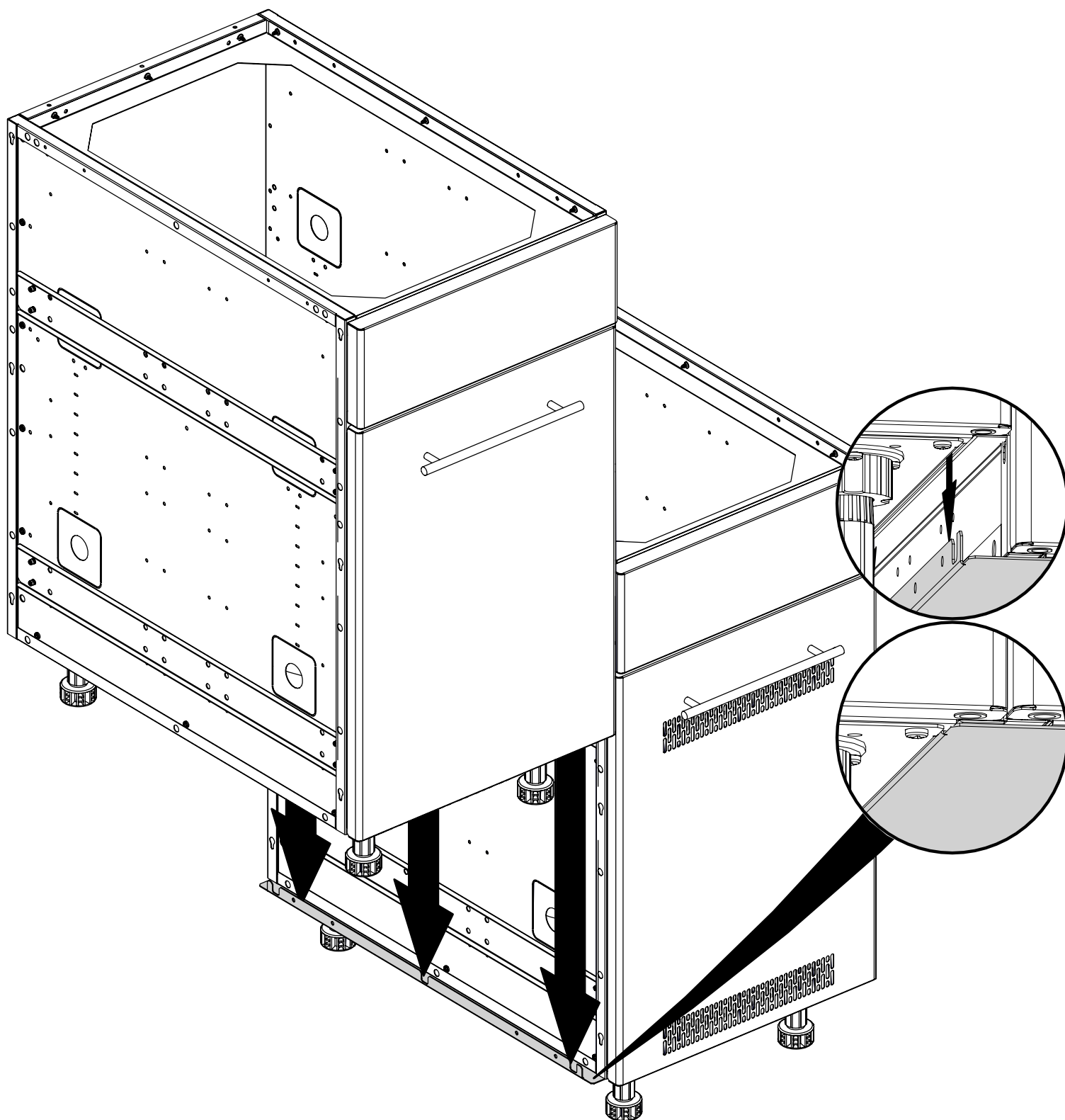
1



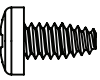
2

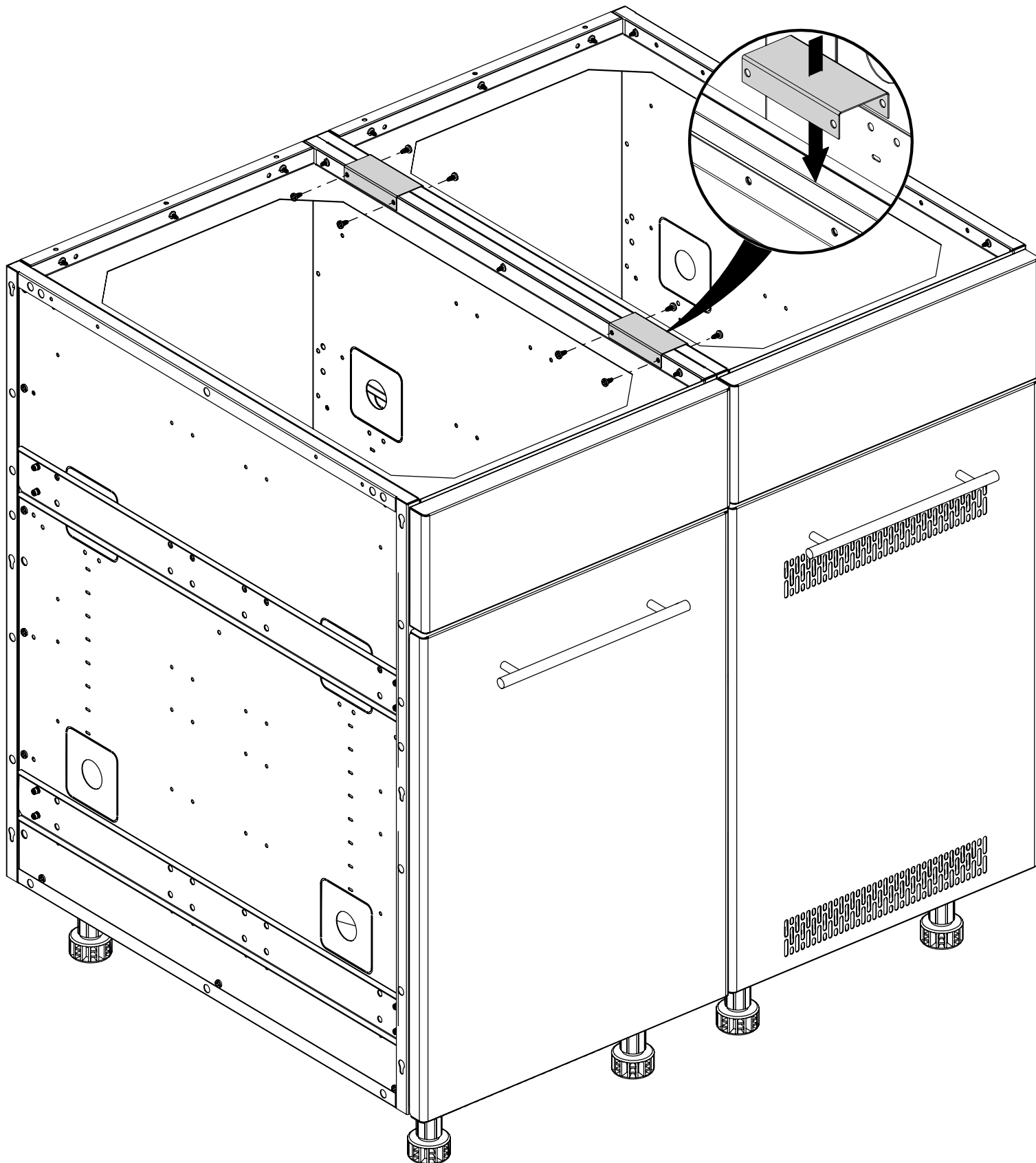


3



4

(8) 



5

(4)

